



# PEGASUS FUN RUN

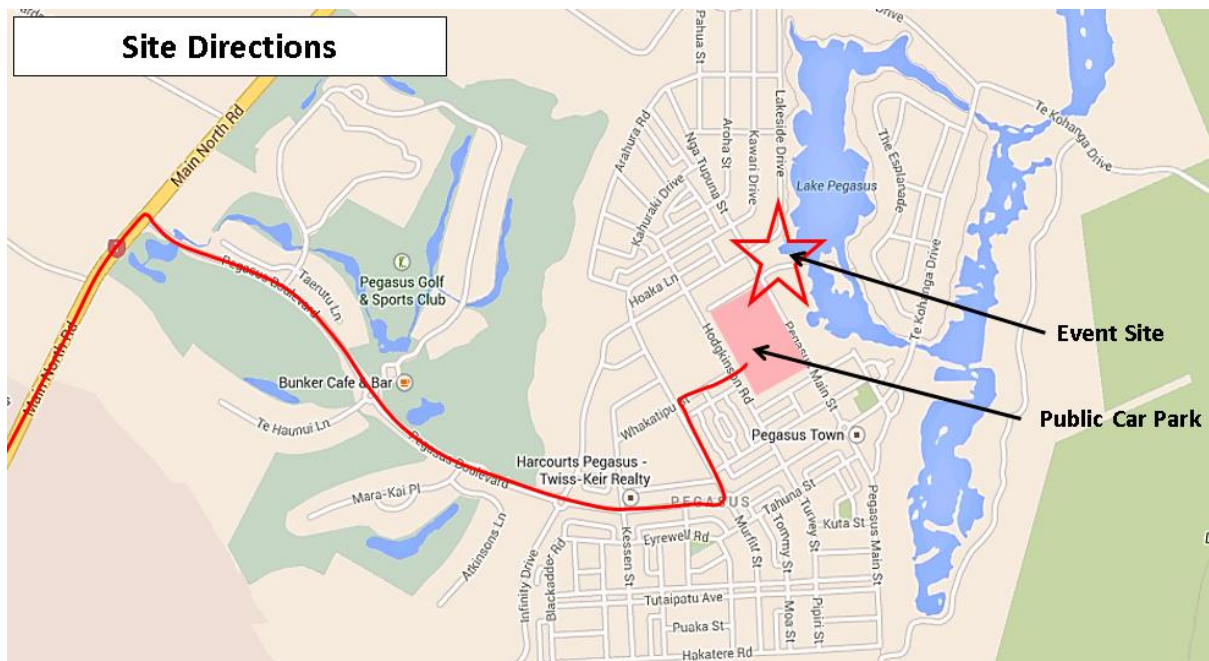


## Timetable:

- 8.30am - 9.45am** On the day registrations and race tag pick up
- 9.30am** Zumba warm up
- 9.50am** Race briefing (compulsory attendance)
- 10am** 6km Fun Run/Walk starts
- 10.15am** 11km Fun Run/Walk starts
- 11.00am** 2.5km Fun Run/Walk starts
- 12.00pm** Prize giving

## Location and Parking:

Pegasus is located 30 kilometres north of Christchurch. Please see the map below for directions from the main road and how to access the carpark off Whakatipu Street.





### Directions from Christchurch

- Head North out of Christchurch on SH1.
- Head North out of Woodend continuing on SH1, then make your first right into the township of Pegasus.
- Continue straight along Pegasus Boulevard.
- Continue straight until the third roundabout, where you take a left onto Solander Road.
- Continue straight along Solander Road, take your third right onto Whakatipu Street
- Carpark entry will be straight ahead.

### PLEASE NOTE:

- Pegasus Main Street will be closed off during the event.
- There will be no entry into the event area via Pegasus Main Street.

### Registration:

If you have pre registered online, you will need to collect your wristband from one of the 3 pick up locations below on Thursday 6 October or Friday 7 October.

#### Thursday 6 October:

- McAlpines Mega Mitre 10 Sports Centre – Rangiora – 5 - 8pm
- Sport Canterbury office – Unit B, 1 Brynley Street, Hornby – 9am - 5pm

- The Athletes Foot Papanui (Northlands Shopping Centre, 55 Main North Road) 5pm - 9pm

**Friday 7 October:**

- McAlpines Mega Mitre 10 Sports Centre – Rangiora – 12pm - 6pm
- Sport Canterbury office – Unit B, 1 Brynley Street, Hornby – 9am - 4pm
- The Athletes Foot Papanui (Northlands Shopping Centre, 55 Main North Road) 4pm - 8pm

**If you collect your registration on either of these days, you will not be required to register on the day; however, you must still attend the race briefing at 9.50am.**

**What if I don't collect my wristband prior to the day?**

Outside of these times you will need to collect your entry wristband on the day from the registration area between 8.30 - 9.45am. Please bring your confirmation form as this will speed up the process on the day.

Participants must wear their wristband at all times. Picking this up prior to the day will avoid registration congestion.

**How much is it to register on the day?**

Adults \$20, Child (5-16years) \$10, Under 5 FREE. – **CASH ONLY!!!!**

**Can I change the distance I entered on the day?**

If you would like to change the distance you are entered in on the day, please see one of the friendly Sport Canterbury staff at the registration desk.

**Course Information:**

**2.5km Course**

The 2.5km course is perfect for any age and level of ability. This course is ideal for walking or running with children, pushing buggies or assisting wheelchairs. The course follows the paths around the lake edge of Pegasus.

*Please note: The 2.5km course will start at 11.00am to allow enough time for parents to finish the 6km or 11km course and then participate with their children. The 2.5km race will start slightly in front of the start/finish line, participants will be called down to the start line approx... 10.55am*

**6km Course**

From the start, the course follows the path around the wetlands and then around Pegasus Lake, continuing across the suspension bridge to the finish. The 6km course is also suitable for buggies and wheelchairs.

**11km Course**

From the start, the course follows the beach road and into the Tuhaitara Coastal Park, along the Pegasus Bay Walkway and then through a short section of single track and joins the Tutaepatu Trail. After re-joining the beach road, the course follows the wetlands track and then along the lake before crossing the suspension bridge to the finish.

Please note: There is a small patch of sand (approx..200m) on the 11km course, please be mindful when running.

**Water & Toilets will be provided at the 6.5km point on the 11km course.**

## **Spot Prizes & Major Prizes:**

### **How do I know if I have won a spot prize?**

If you have won a spot prize, you will have a sticker on the back of your certificate. You will receive a certificate & complimentary water as you cross the finish line.

### **Where do I collect my spot prize if I win?**

The spot prize tent and information area will be located next to the stage; this will be open from 10am; you will need to take your certificate with you to the spot prize collection desk to collect your prize.

### **Major Spot Prizes**

- Major spot prizes will be drawn on stage at the prize giving, participants present at the prize giving will go in the draw to win the major prizes. All participants need to do is put their entry wristband in the draw at the spot prize tent next to the stage before 11.55am. Please make sure your entry wrist band has your full name and phone number as this will be the only way we can identify you.
- The major spot prizes will be drawn in front of the crowd at the prize giving; this will ensure the major spot prize winners are present at the prize giving.

You will need to be present at the prize giving to receive your major spot prize

## **Other important information:**

**Toilets:** There will be plenty of toilets in the event village beside the start/finish line. There are now four toilets located at the 6.5km mark of the 11km course

**Water:** There is water station at the 6.5km mark on the 11km course only, everyone will receive a complimentary water when they finish the race.

**Bag storage:** Unfortunately, there is no designated area to store your bags therefore we recommend leaving your valuables locked securely in your car.

**Food & Beverage:** There will be a wide range of food and coffee vendors onsite. There is no guarantee food vendors will have eftpos facilities available, it would be a good idea to have cash on hand.

If you do need cash, there is an ATM located at the General Store in Pegasus Town.

**Entertainment:** There will be music at the finish line and bouncy castles for the kids to enjoy.

**Dogs:** No dogs are not allowed on the course.

**First Aid:** St Johns will be present at the event and will be stationed beside the finish line. St John should be the first point of contact if you are feeling unwell or need immediate attention.

**Taking extra care of Children around the lake:** Lake Pegasus is not patrolled therefore extra care needs to be taken of your young ones accessing the lake, any children found during the event unattended will be taken to the registration desk before 10am, after 10am any lost children will be taken to the spot prize tent next to the stage. The MC will then make an announcement to try and locate the parent/guardian. **Anyone under the age of 13 years old must be accompanied by an adult at ALL TIMES during the Hellers Pegasus Fun Run 2016 event.**

Don't forget to follow [Hellers Pegasus Fun Run facebook](#) page for more information leading up to event day and stay tuned for post event photos.